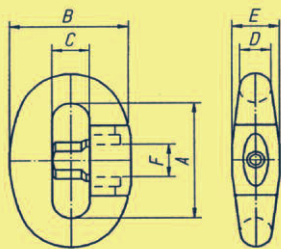


1



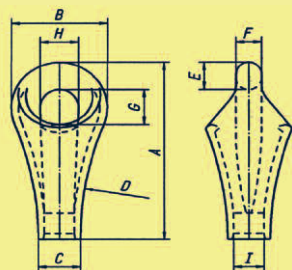
Technical specifications of Nemag Quick Release Links

Link size	Working load	Breaking load	Size in mm						Weight
			A	B	C	D	E	F	
4	3000	25000	76	76	24,5	19	30	21	0,9
5	4500	33000	84	84	27	21	33	23	1,2
6	5000	37500	92	92	29,5	23	35	25	1,5
7	7000	49000	100	100	32	25	38	28	2
8	8000	54000	108	108	34,5	27	41	31	2,5
9	9500	60000	116	116	37	29	44	34	3,1
10	12000	75000	128	128	40,5	32	48	37	4,4
11	15000	95000	140	140	44	35	53	40	5,7
12	17000	110000	152	152	47,5	38	57	43	7,2
13	21000	135000	164	164	51	41	62	46	8,7
14	26000	160000	176	173	54	44	66	50	11
15	30000	175000	188	188	58	47	71	52	13,5
17	42500	260000	222	222	68	56	84	62	23

Dimension tables are subject to change.

The working load is the recommended maximum load for grabbing operations when quick release links and rope pear sockets are passing over a special cable sheave. For other applications a safety factor in line with official international and national guidelines has to be adhered to.

2



Technical specifications of Nemag Rope Pear Sockets

Pear size	Wire rope diam.	Work. load	Break. load	Size in mm									Weight
				A	B	C	D	E	F	G	H	I	
1	10-11	1500	10000	81	48	22	195	12	11,5	20	24	12	0,4
2	12-13	2000	14000	94	56	25	195	15,5	13,5	22	25	14	0,5
3	14-15	2500	17500	108	64	28	220	17,5	15,5	24	29	16	0,6
4	16-17	3000	22500	122	70	31	220	19,5	17,5	26	31	18	0,9
5	18-19	4500	27500	135	84	33	245	21	19	30	42	20	1,3
6	20-21	5000	35000	152	84	36	310	23	21	33	38	23	1,7
7	22-24	7000	42500	166	100	40	310	26	23	37	48	26	2,3
8	25-27	8000	52500	186	100	43	350	28	25	39	44	29	3,2
9	28-30	11000	70000	202	120	45	350	31	27	40	58	32	4,1
10	31-33	13000	85000	222	120	52	445	32	28,5	45	56	35	5,2
11	34-36	15000	95000	239	142	55	445	36	31,5	50	70	40	6,4
12	37-39	17000	110000	264	142	60	495	39	34,5	51	64	41	7,9
13	40-42	21000	125000	285	166	63	555	43	36,5	59	80	44	9,5
14	43-45	26000	155000	312	166	68	595	47	40	62	72	48	11,2
15	46-48	30000	180000	337	170	75	595	51	44	66	68	53	13
17	52-56	42500	240000	400	220	84	880	60	54	75	90	59	23

Dimension tables are subject to change.

The working load is the recommended maximum load for grabbing operations when quick release links and rope pear sockets are passing over a special cable sheave. For other applications a safety factor in line with official international and national guidelines has to be adhered to.